

McCord Memorial Library presents

Imagine Your Story
Summer reading program 2020

Youth resources

2nd to 4th Grade



A Letter to parents

Welcome to our 2020 Summer Reading Program

Within you will find activities that are curated
for your child's age group.

This packet is designed to be used from June 15th to August 8th,
the entirety of the program.

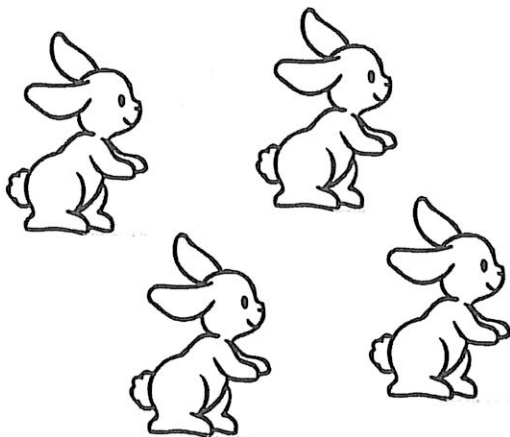
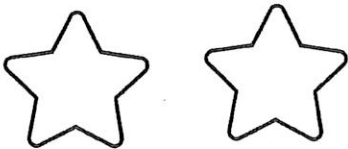
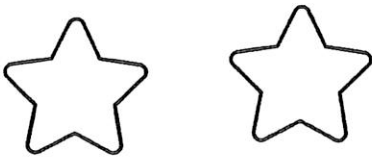
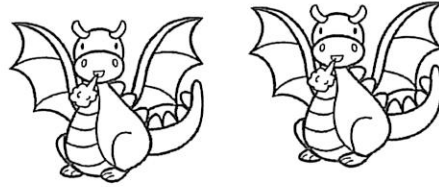
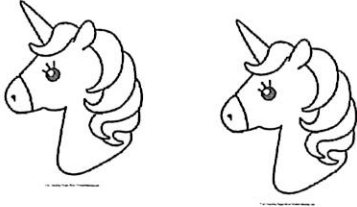
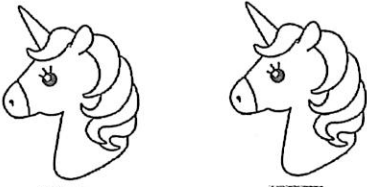
Your child may also pick up weekly prizes and activities. Please call
the library to pick these up.

Thank you and Happy Summer,

The McCord Memorial Library Staff

Reading Log

Color in 1 picture when you read for 15 minutes



Reading and understanding



Answer these questions about both the **extracts**.

Charles Dickens uses more detail than many modern writers would. Why do you think this is?

.....

.....

Dickens uses many long sentences and repeats words. What effect does this have on the reader?

.....

.....

Find as many **adjectives** describing **colors**, **sounds**, and **smells** as you can. Write them here.

Remember: An **adjective** is a describing word.

.....

.....

.....

Find a **metaphor** for smoke and write it here.

Remember: A writer uses a **metaphor** to describe something as if it were something else.

.....

Find a **simile** for a steam-engine and write it here.

Remember: A **simile** is used to compare one thing with another to create an image in the reader's mind. It often includes the words **like** or **as**.

.....

Here are some of the words that you may have found unfamiliar or difficult. Draw a line to match each one with its meaning. The first one has been done for you.

interminable
monotonously
melancholy
counterpart
wearisome
stokers
visage
oozed
languidly

very sad
leaked slowly
endless
weakly
same
in the same dull way
furnace feeders
boring and tiring
face

Compound words



Some words are made up of two other words. When two short words make one long word, the long word is called a **compound word**.

Write the two words without a space between them to make one **compound word**, like this: **head + rest = headrest**.

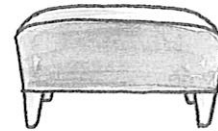
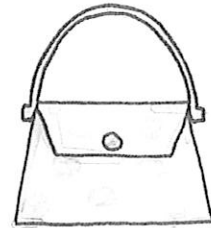
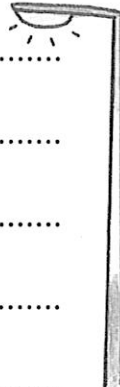
lamp + post = lamppost.....

her + self =

milk + man =

hand + bag =

foot + stool =



Draw lines to join up these **compound words**.

foot

card

play

bag

him

cake

school

man

post

ball

post

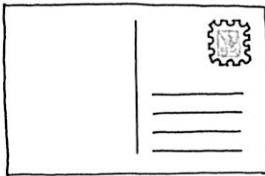
spoon

pan

self

tea

ground



Now write a list of the **compound words** that you joined above.

.....

.....

.....

.....

.....

.....

.....

.....

Food to die for



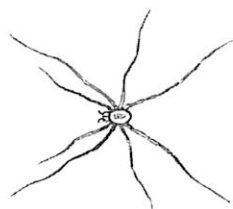
Background knowledge

When living things die, other living things feed on them. If they have a skeleton or shell, it will be the only part left after all the soft parts are eaten. Earthworms feed on dead plants. Other animals, such as the maggots of flies, feed on dead animals. There are also tiny living things called *microbes* that feed on dead plants and animals. Bacteria and some fungi are microbes. When dead things *decay*, they are really being eaten by microbes!

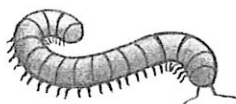
Science activity

Here are some animals found in woodlands, where there are decaying leaves. Can you use this yes/no key to find their names?

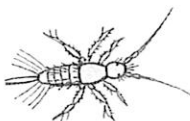
- Clue 1 Does the animal have six legs? If yes, it is a springtail.
Does the animal have more than six legs? If yes, go to clue 2.
- Clue 2 Does it have eight legs? If yes, it is a harvestman.
Does it have more than eight legs? If yes, go to clue 3.
- Clue 3 Does it have a broad, flat body? If yes, it is a woodlouse.
Does it have a long, thin body? If yes, go to clue 4.
- Clue 4 Does each section of the body have two legs? If yes, it is a centipede.
Does each section of the body have four legs? If yes, it is a millipede.



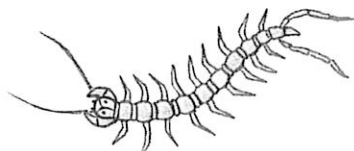
This is a



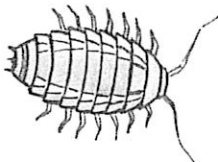
This is a



This is a



This is a



This is a

Science investigation

⚠ Take extra care - ask an adult to supervise you.

Design and conduct an experiment to see what factors in the environment can affect the decay of an apple core. Examples of some factors are temperature, light, and moisture. Only one factor should be tested at a time.



A fantasy story

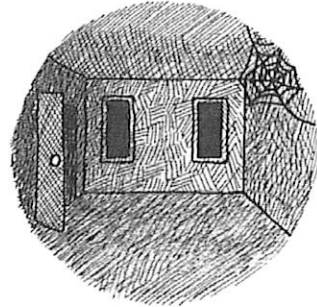


Read this **story** in a spooky voice.

In a dark, dark woods
was a dark, dark house.



In the dark, dark house
was a dark, dark room.

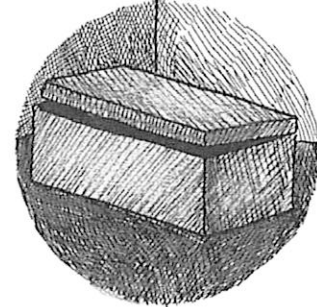


In the dark, dark room
was a dark, dark chest.

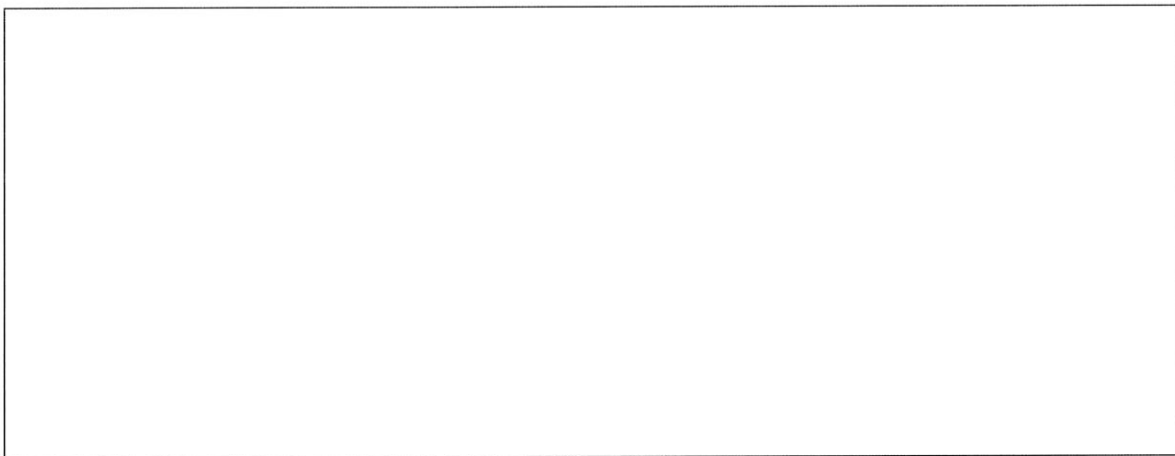
In the dark, dark chest
was a dark, dark box.



In the dark, dark box
was a ...



What do you think was in the dark, dark box? Draw a picture of it.



Write a **title** for this story.

Remember: The **title** is the name of the story. The words in a **title** start with capital letters.

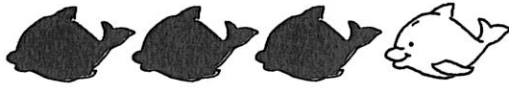
.....


Read the **story** again. Say something different is in the dark, dark box this time.

Parts of a set



Write the fraction that shows the shaded part of the set.
How many of the fish are shaded?

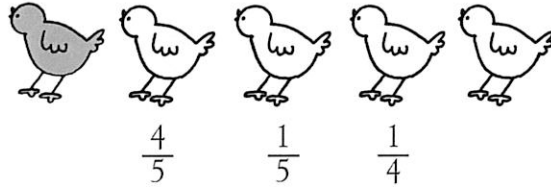
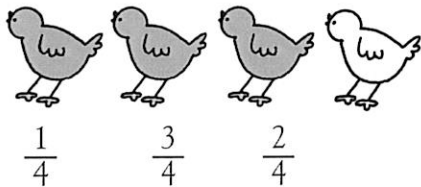
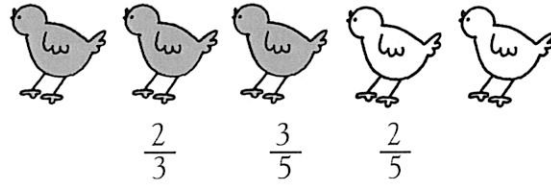
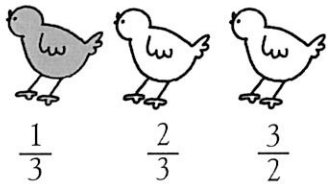


How many  ?
How many fish in all?

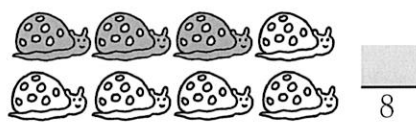
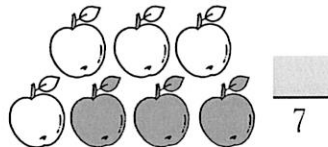
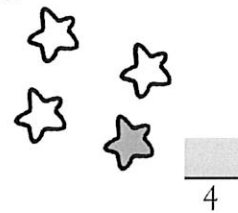
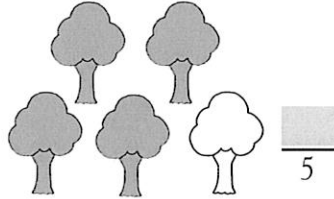
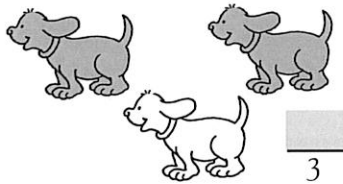
Write the fraction.

$\frac{3}{4}$ part of the set
whole set

Circle the fraction that shows the shaded part of the set.



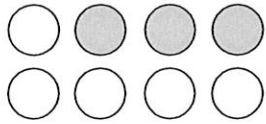
Write the fraction that shows the shaded part of the set.



Fractions



Write the fraction for the part that is shaded.



How many shaded circles?

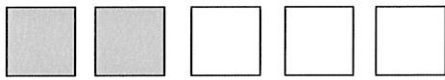
3

How many circles?

8

So, the fraction of circles shaded = $\frac{3}{8}$ $\frac{\text{numerator}}{\text{denominator}}$

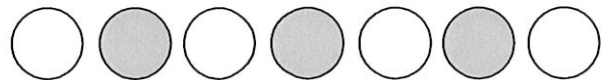
Circle the fraction that shows the part that is shaded.



$\frac{2}{5}$

$\frac{2}{3}$

$\frac{3}{5}$

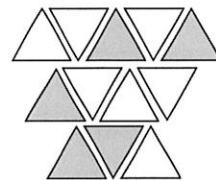
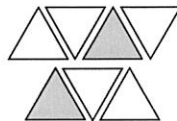
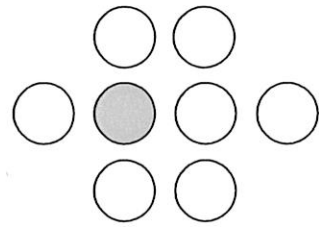
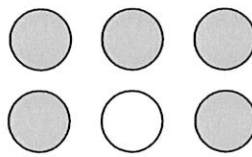
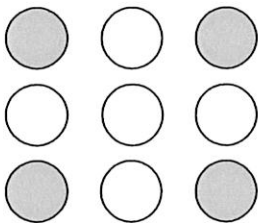
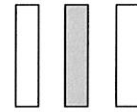
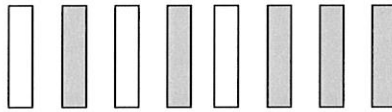
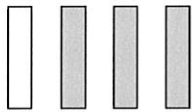


$\frac{3}{4}$

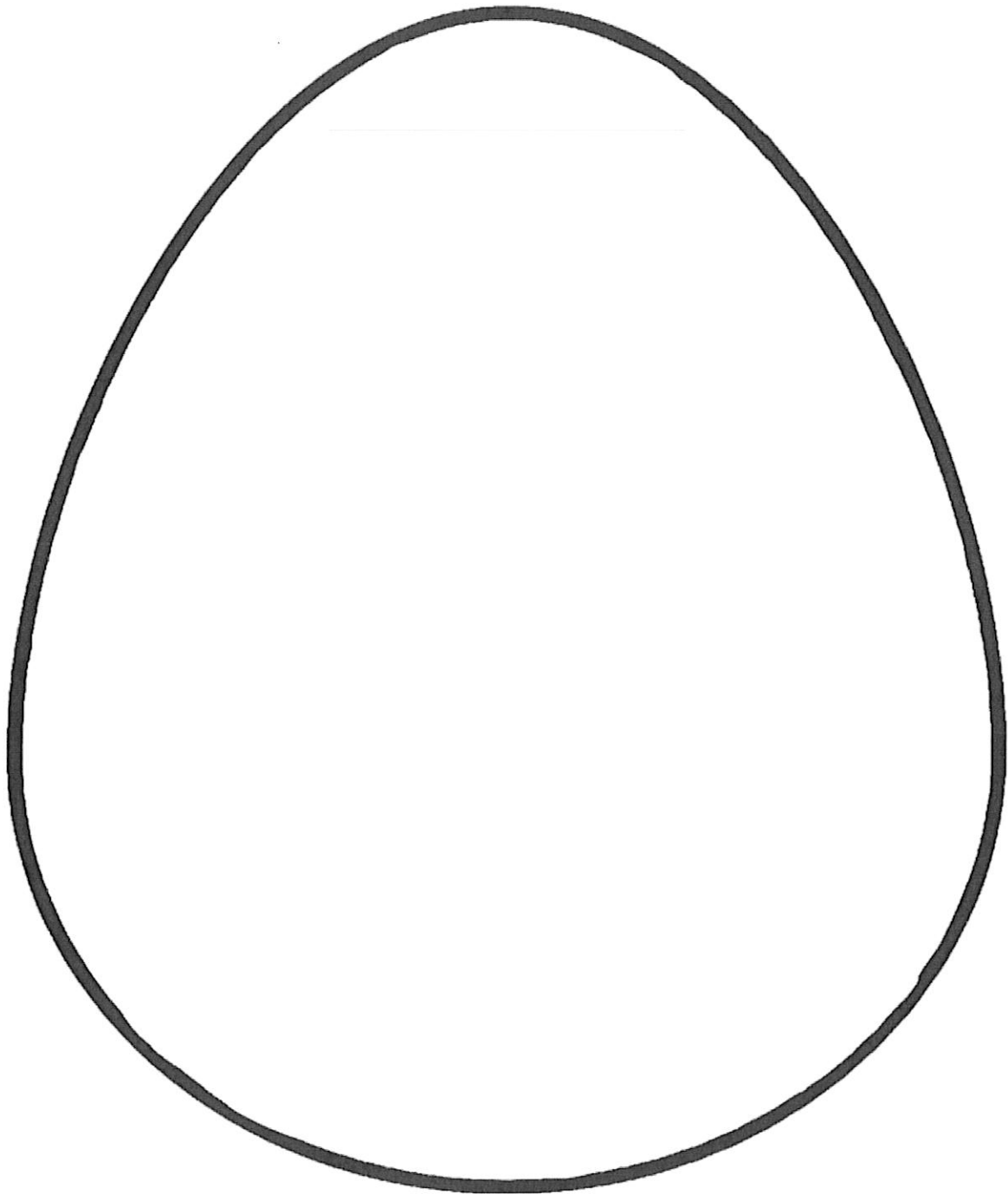
$\frac{4}{7}$

$\frac{3}{7}$

Write the fraction for the part that is shaded.



Color a Dragon Egg



Color a Dragon



Color a Castle

